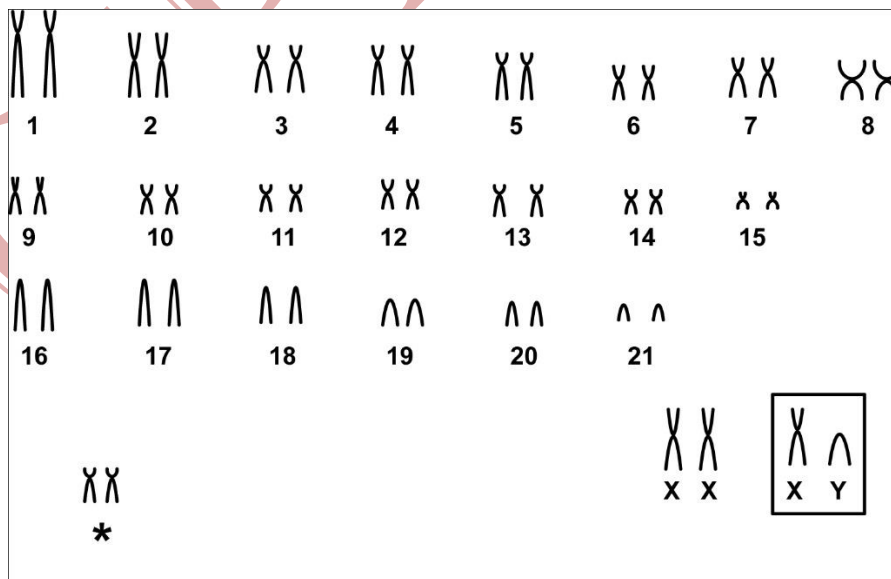


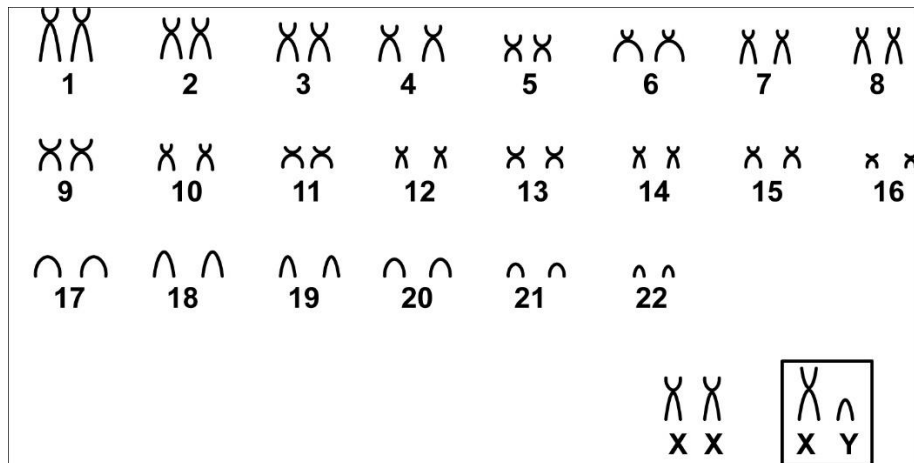
# *Ctenomys minutus* Nehring, 1887

Modified karyotype from Freygang (2002)

2n	NF	X Chromosome	Y Chromosome	Locality	Coordinate
46					31°23'S – 51°09'W
47	76			Tavares - RS	31°25'S – 51°10'W
48					
48					31°38'S – 51°26'W
49	76, 77 e 78	Large submetacentric	Small acrocentric	Bojuru - RS	31°44'S – 51°34'W
50					31°45'S – 51°35'W
50	76 77			São José do Norte - RS (Brazil)	31°52'S – 51°53'W

Conventional staining





## Reference

Freygang, C. C. 2002. **Variação Cromossômica em *Ctenomys minutus* ao longo da sua Distribuição Geográfica.** Universidade do Rio Grande do Sul, Porto Alegre, RS.

## Link

<http://www.lume.ufrgs.br/bitstream/handle/10183/78858/000314833.pdf?sequence=1>