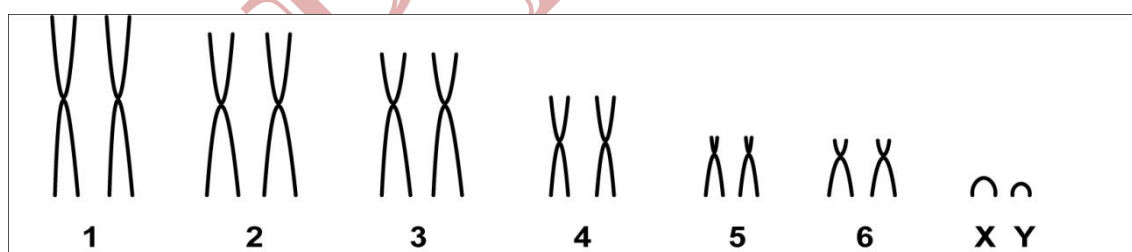


Cryptonanus guahybae (Tate, 1931)

Modified karyotype from Quintela *et al.* (2011)

2n	NF	X Chromosome	Y Chromosome	Locality	Coordinates
4	24	Small submetacentric	Small acrocentric	Hydroelectric of Itá-UHI - RS	27°17'S, 52°23'W
				Venâncio Aires - RS	29°60'S, 51°19'W
				Derrubadas - RS	27°15'S, 52°51'W
				Tapes - RS	30°40'S, 51°23'W
				Esmeralda, Ecological Station of aracuri - RS	28°13'S, 51°09'W
				Rio Grande, Environmental Protection Area of Lagoa Verde and surroundings - RS (Brazil)	32°02'S, 52°05'W

Conventional staining



*Ag-RONs staining available in Quintela *et al.* (2011)

Reference

Quintela, F. M.; Santos, M. B.; Gava, A.; Christoff, A. U. 2011. **Notas Sobre Morfologia, Distribuição Geográfica, História Natural e Citogenética de *Cryptonanus guahybae* (Didelphimorphia: Didelphidae).** Mastozoologia Neotropical 18(2):247-257.

Link

<http://www.scielo.org.ar/pdf/mznt/v18n2/v18n2a07.pdf>