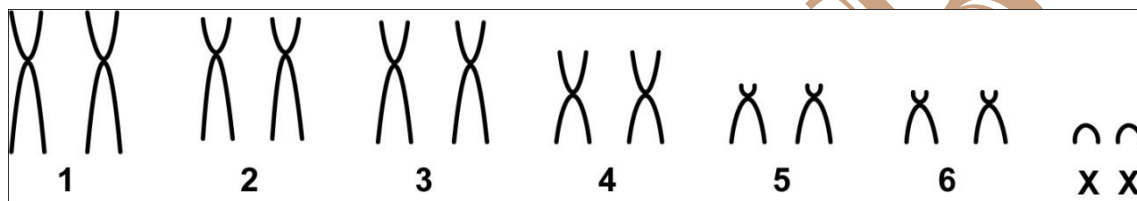


Cryptonanus agricolai (Moojen, 1943)

Modified karyotype from Bezerra *et al.* (2014)

2n	NF	X Chromosome	Locality
14	24	Small acrocentric	Porto da Folha - SE (Brazil)

Conventional staining



Reference

Bezerra, A. M. R.; Lazar, A.; Bonvicino, C. R.; Cunha, A. S. 2014. **Subsidies for a poorly known endemic semiarid biome of Brazil: non-volant mammals of an eastern region of Caatinga.** Zoological Studies 53:16.

Link

<http://www.zoologicalstudies.com/content/pdf/1810-522X-53-16.pdf>