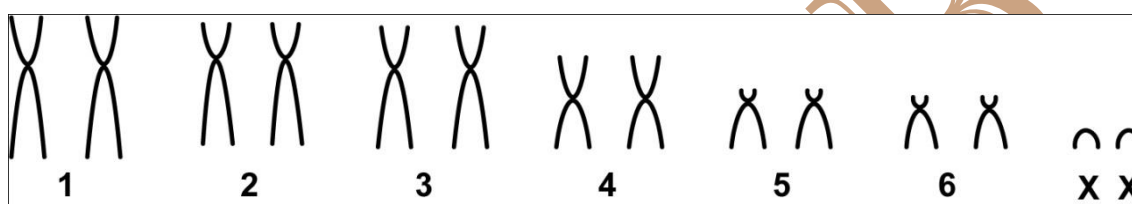


## *Cryptonanus agricolai* (Moojen, 1943)

Cariótipo modificado de Bezerra *et al.* (2014)

2n	NF	Cromossomo X	Localidade
14	24	Acrocêntrico pequeno	Porto da Folha - SE (Brasil)

Coloração Comum



Referência

Bezerra, A. M. R.; Lazar, A.; Bonvicino, C. R.; Cunha, A. S. 2014. **Subsidies for a poorly known endemic semiarid biome of Brazil: non-volant mammals of an eastern region of Caatinga.** Zoological Studies 53:16.

Link

<http://www.zoologicalstudies.com/content/pdf/1810-522X-53-16.pdf>