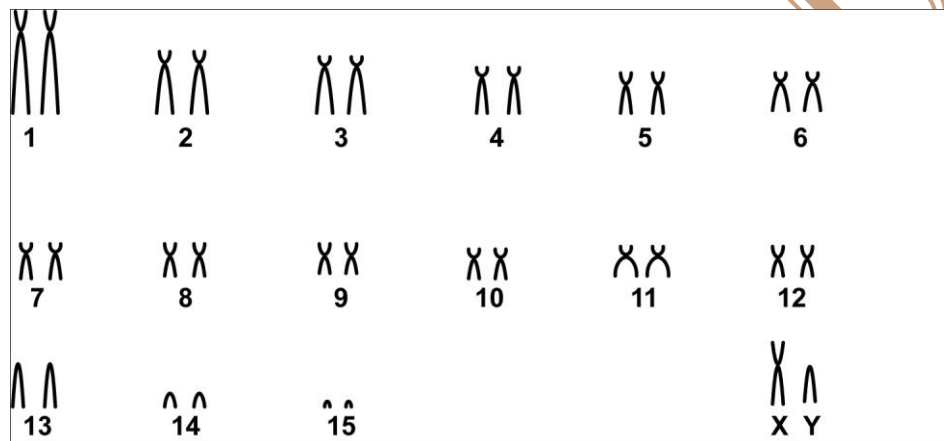


Clyomys laticeps (Thomas, 1909)

Modified karyotype from Bezerra *et al.* (2012)

2n	NF	X Chromosome	Y Chromosome	Locality	Coordinate
32	54	Medium submetacentric	Medium acrocentric	Emas National Park - GO (Brazil)	18°15'50"S, 52°53'33"W

Conventional staining



*C-Banding and G-Banding available in Bezerra *et al.*, 2012

Reference

Bezerra, A. M. R.; Pagnozzi, J. M.; Carmignotto, A. P.; Yonenaga-Yassuda, Y.; Rodrigues, F. H. 2012. **A new karyotype for the spiny rat *Clyomys laticeps* (Thomas, 1909) (Rodentia, Echimyidae) from Central Brazil.** *CompCytogen* 6(2): 153–161.

Link

<http://www.ncbi.nlm.nih.gov/pmc/articles/PMC3833794/pdf/CompCytogen-006-153.pdf>