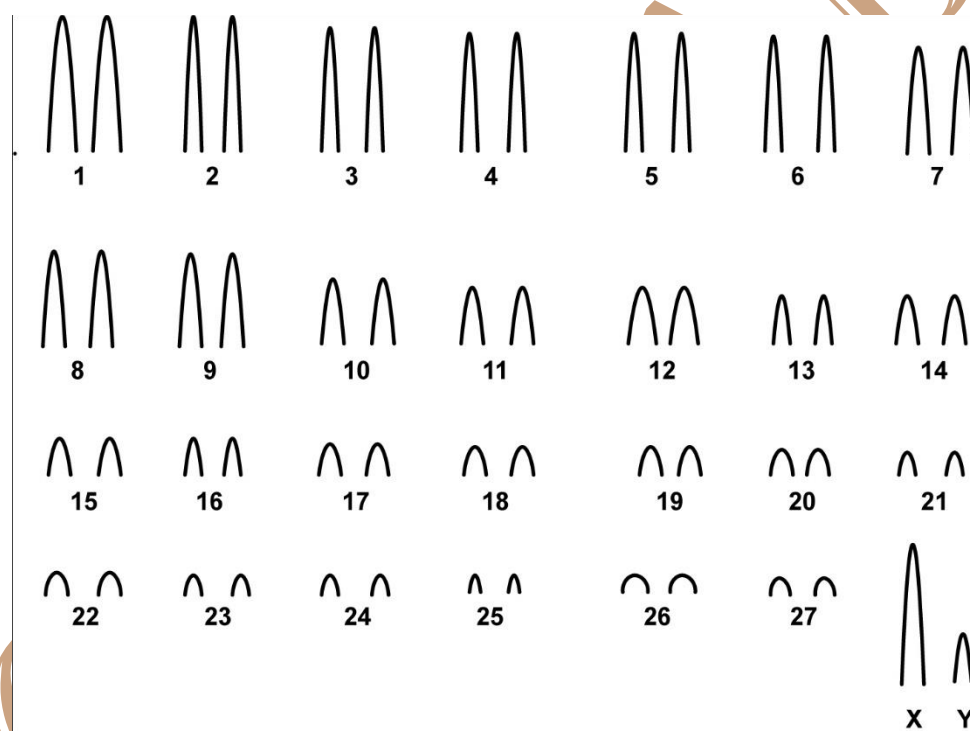


Cerradomys marinhus (Bonvicino, 2003)

Modified karyotype from Bonvicino *et al.* (2012)

2n	NF	X Chromosome	Y Chromosome	Locality	Coordinate
56	54	Large acrocentric	Small acrocentric	Region of Trijunção farm, Jaborandi municipality - BA (Brazil)	14°46'S, 45°56'W e 14°47'S, 45°57'W

Conventional staining



Reference

Bonvicino, C. R.; Lindbergh, S. M.; Faria, M.B. & Bezerra, A. M. R. 2012. **The Eastern Boundary of the Brazilian Cerrado: A Hotspot Region.** *Zoological Studies* 51(7): 1207-1218 (2012).

Link

<http://zoolstud.sinica.edu.tw/Journals/51.7/1207.pdf>