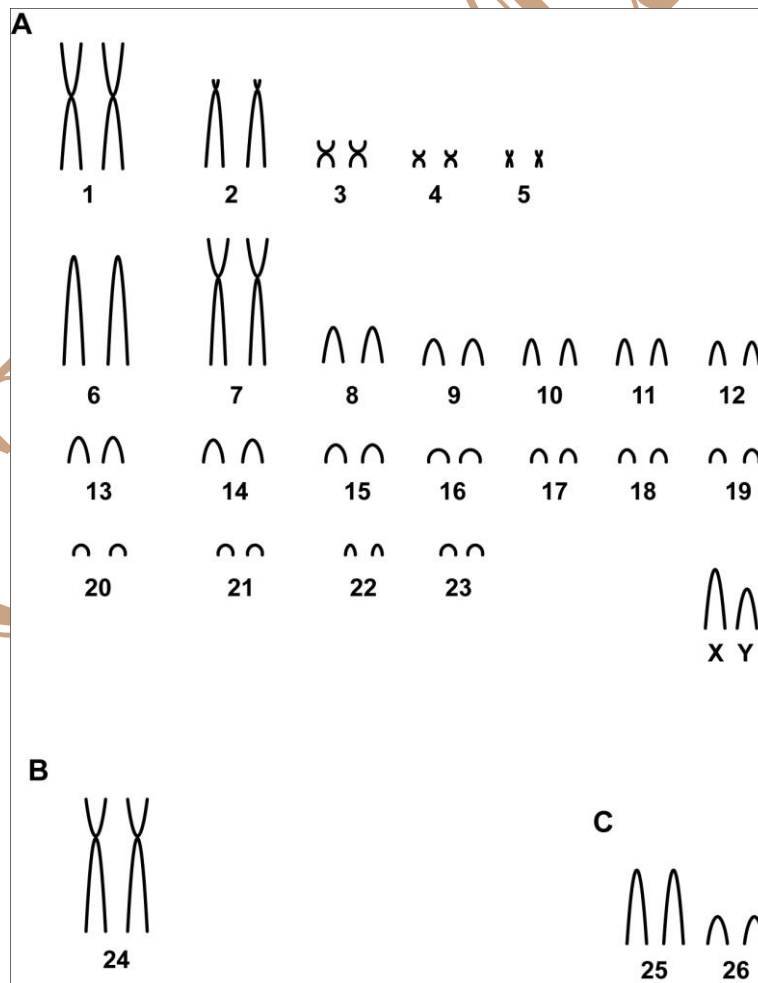


Cerradomys langguthi Percequillo *et al.* (2008)

Modified karyotype from Geise *et al.* (2010)

2n	NF	X Chromosome	Y Chromosome	Locality	Coordinate
48, 49, 50	56	Medium acrocentric	Medium acrocentric	Corredor São João, Pacatuba Farm, Sapé - PB (Brazil)	8°31'25"S, 37°14'24.5"W 952 m; 8°31'25"S, 37°14'24.5"W 952 m; 8°34'53.8"S, 37°14'29.2"W 972 m; 8°31'25"S, 37°14'24.5"W 952 m; 8°30'29.9"S, 37°16'51.1"W 946 m

Conventional staining



(a-Male with $2n = 48$; b- male heteromorphic pair with $2n = 48$; c- pairs of the male subject with $2n = 50$)

Reference

Geise, L.; Paresque, R.; Sebastião, H.; Shirai, L.T.; Astúa, D.; Marroig, G. 2010. **Non-volant mammals, Parque Nacional do Catimbau, Vale do Catimbau, Buíque, state of Pernambuco, Brazil, with karyologic data.** Check List, Volume 6 | Issue 1.

Link

<http://www.checklist.org.br/getpdf?SL054-09>

CIPEMAB