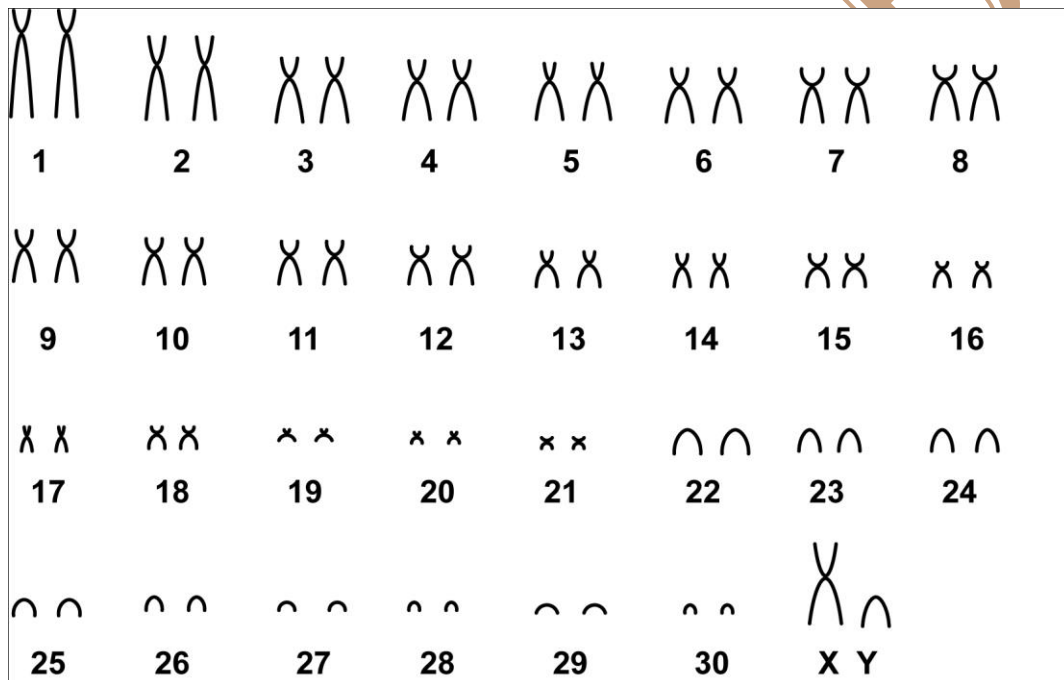


Cavia magna Ximenez, 1980

Modified karyotype from Gava *et al.* (2011)

2n	NF	X Chromosome	Y Chromosome	Locality	Coordinate
62	104	Large metacentric	Small submetacentric	Marinheiras Island - RS (Brazil)	32° 5' S, 52° 11' W

Conventional staining



*C-Banding available in Gava *et al.* (2011)

Reference

Gava, A.; Santos, M.B.; Quintela, F.M. 2011. A new karyotype for *Cavia magna* (Rodentia: Caviidae) from an estuarine island and *C. aperea* from adjacent mainland. Acta Theriol 57:9-14.

Link

[http://www.researchgate.net/publication/241044210_A_new_karyotype_for_Cavia_magna_\(Rodentia_Caviidae\)_from_an_estuarine_island_and_C._aperea_from_adjacent_mainland](http://www.researchgate.net/publication/241044210_A_new_karyotype_for_Cavia_magna_(Rodentia_Caviidae)_from_an_estuarine_island_and_C._aperea_from_adjacent_mainland)