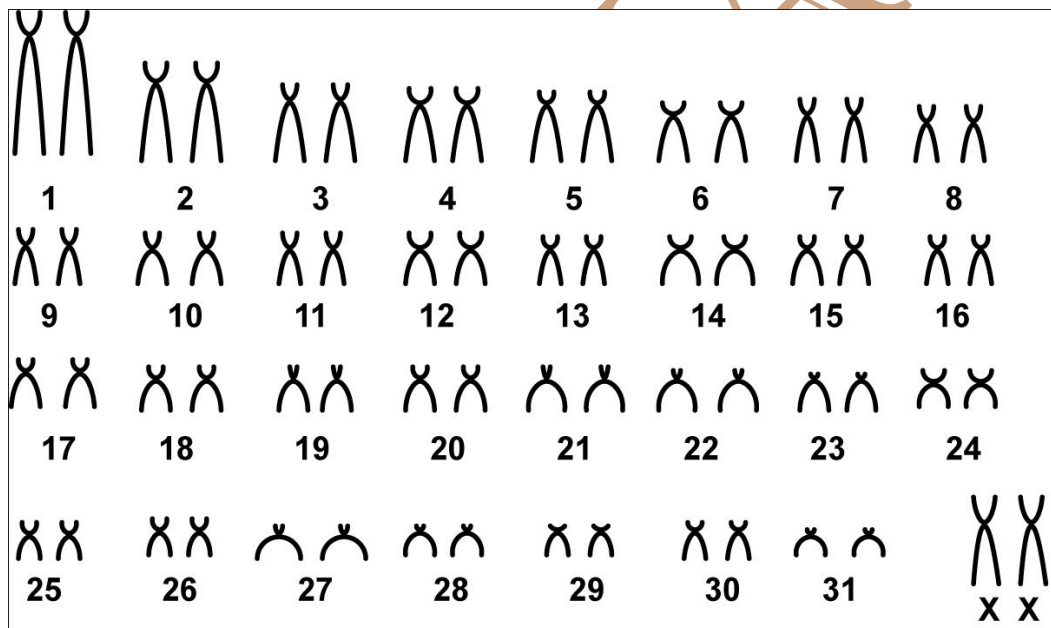


Cavia aperea Erxleben, 1777

Modified karyotype from Gava et al. (2011)

2n	NF	X Chromosome	Y Chromosome	Locality	Coordinate
64	124	Medium submetacentric	Small submetacentric	Domingos Petrolini Palma - RS (Brazil)	32°1'33.70" S, 52°19'36.92" W 32°5'7.65" S, 52°20'13.80" W

Conventional staining



Reference

Gava, A.; Santos, M. B. e Quintela, F. M. 2011. **A new karyotype for *Cavia magna* (Rodentia: Caviidae) from an estuarine island and *C. aperea* from adjacent mainland.** Acta Theriol DOI 10.1007/s13364-011-0042-0.

Link

<http://www.researchgate.net/publication/241044210> A new karyotype for *Cavia magna* (Rodentia Caviidae) from an estuarine island and *C. aperea* from adjacent mainland

Karyotype in Band G and C available in Maia (1984)

2n	NF	X Chromosome	Y Chromosome	Locality
64	116	Medium submetacentric	Pernambuco (Brazil)	8 ° 44' S, 35 ° 11' W; 8 ° 44' S, 35 ° 11' W e 7 ° 31' S, 39 ° 43' W; 7 ° 52' S, 37 ° 58' W

Reference

Maia, V. 1984. **Karyotypes of three species of Caviinae (Rodentia, Caviidae).** *Experientia*, Volume 40, Issue 6, pp 564-566.

Link

<http://link.springer.com/article/10.1007/BF01982332#page-1>

CIPEMAB