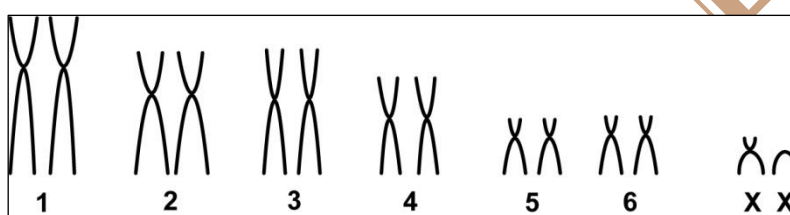


Caluromys philander (Linnaeus, 1758)

Modified karyotype from Souza *et al.* (2013)

2n	NF	X Chromosome	Locality	Coordinates
14	24	A Submetacentric and a small acrocentric	Pará and Amazonas (Brazil)	0°27'S, 51°40'W 03°08'S, 59°57'W

Conventional staining



*C-Banding available in Souza *et al.* (2013)

Reference

Souza, E. M. S.; Silva, C. E. F.; Eler, E. S.; Silva, M. N. F.; Feldberg, F. 2013. **Variations of chromosomal structures in *Caluromys philander* (Didelphimorphia: Didelphidae) from the Amazon region.** *Genetica*. Volume 141, Issue 1, pp 89-93.

Link

<http://link.springer.com/article/10.1007%2Fs10709-013-9708-7>