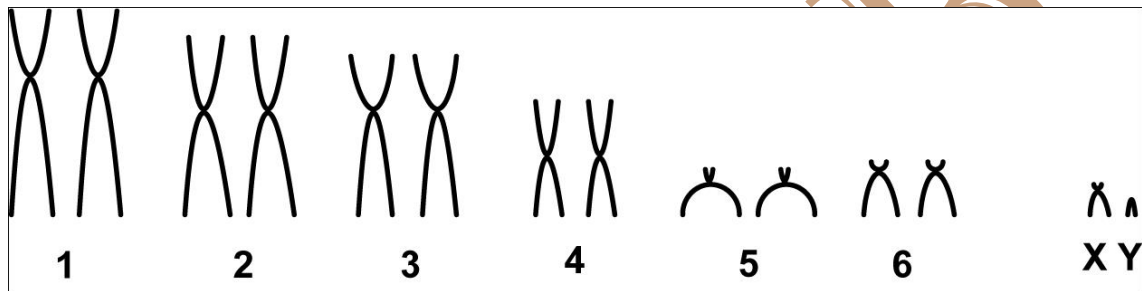


Caluromys lanatus (Olfers, 1818)

Modified karyotype from Souza *et al.* (2013)

2n	NF	X Chromosome	Y Chromosome	Locality	Coordinate
14	24	Small submetacentric	Small acrocentric	Aripuanã River-AM (Brazil)	06°17'44"S, 60°23'33"W

Conventional staining



*C-Banding available in Langguth *et al.*, 2005

Reference

Souza, E. M. S.; Silva, C. E. F.; Eler, E. S.; Silva, M. N. F.; Feldberg, F. 2013. **Variations of chromosomal structures in *Caluromys philander* (Didelphimorphia: Didelphidae) from the Amazon region.** *Genetica*, volume 141, Issue 1, pp 89-93.

Link

<http://link.springer.com/article/10.1007%2Fs10709-013-9708-7>