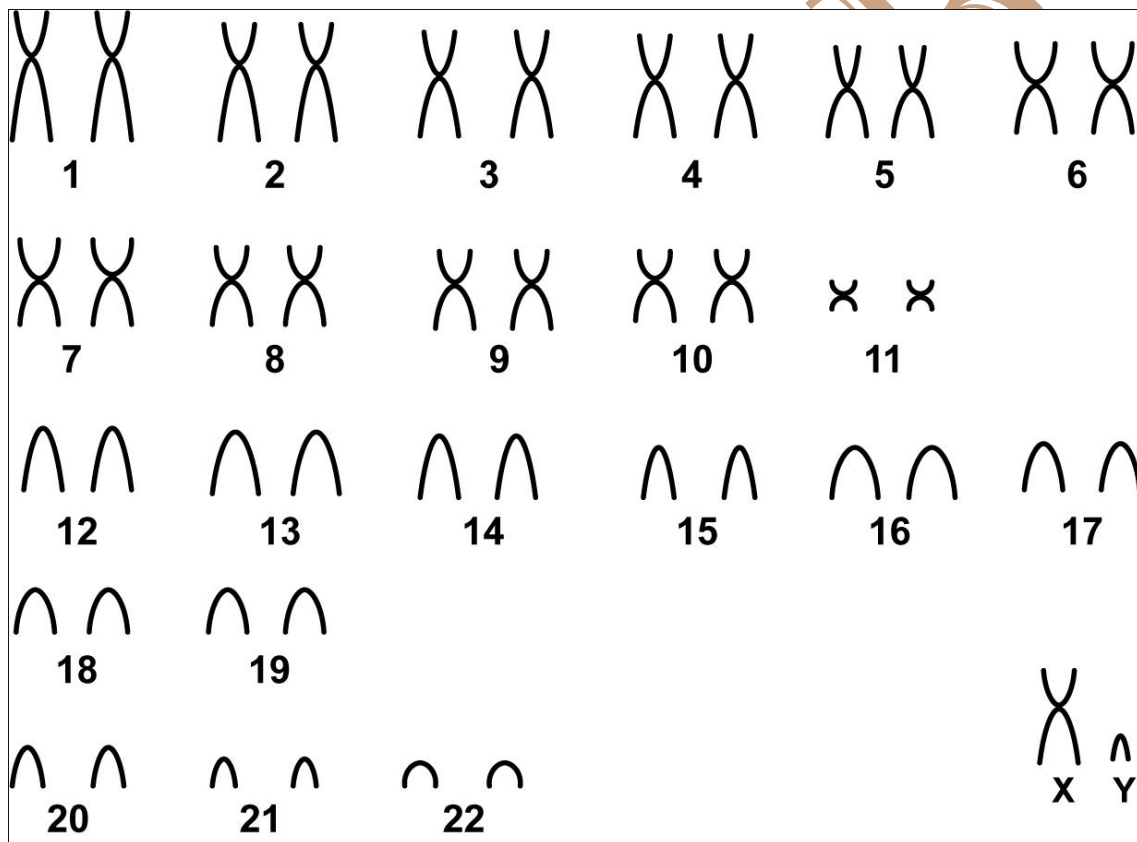


## *Calomys tocantinsi* Bonvicino *et al.* (2003)

Modified karyotype from Bonvicino *et al.* (2003)

2n	NF	X Chromosome	Y Chromosome	Locality	Coordinate
46	66	Medium acrocentric	Small acrocentric	Beira Rio Rancho, Formoso do Araguaia- TO (Brazil)	11°47'S 49°45'W

Conventional staining



Reference

Bonvicino, C. R.; Lima, J. F. S.; Almeida, F. C. 2003. **A new species of *Calomys* Waterhouse (Rodentia, Sigmodontinae) from the Cerrado of Central Brazil.** *Revista Brasileira de Zoologia* 20 (2): 301-307.

Link

<http://www.scielo.br/pdf/rbzoool/v20n2/v20n2a21.pdf>