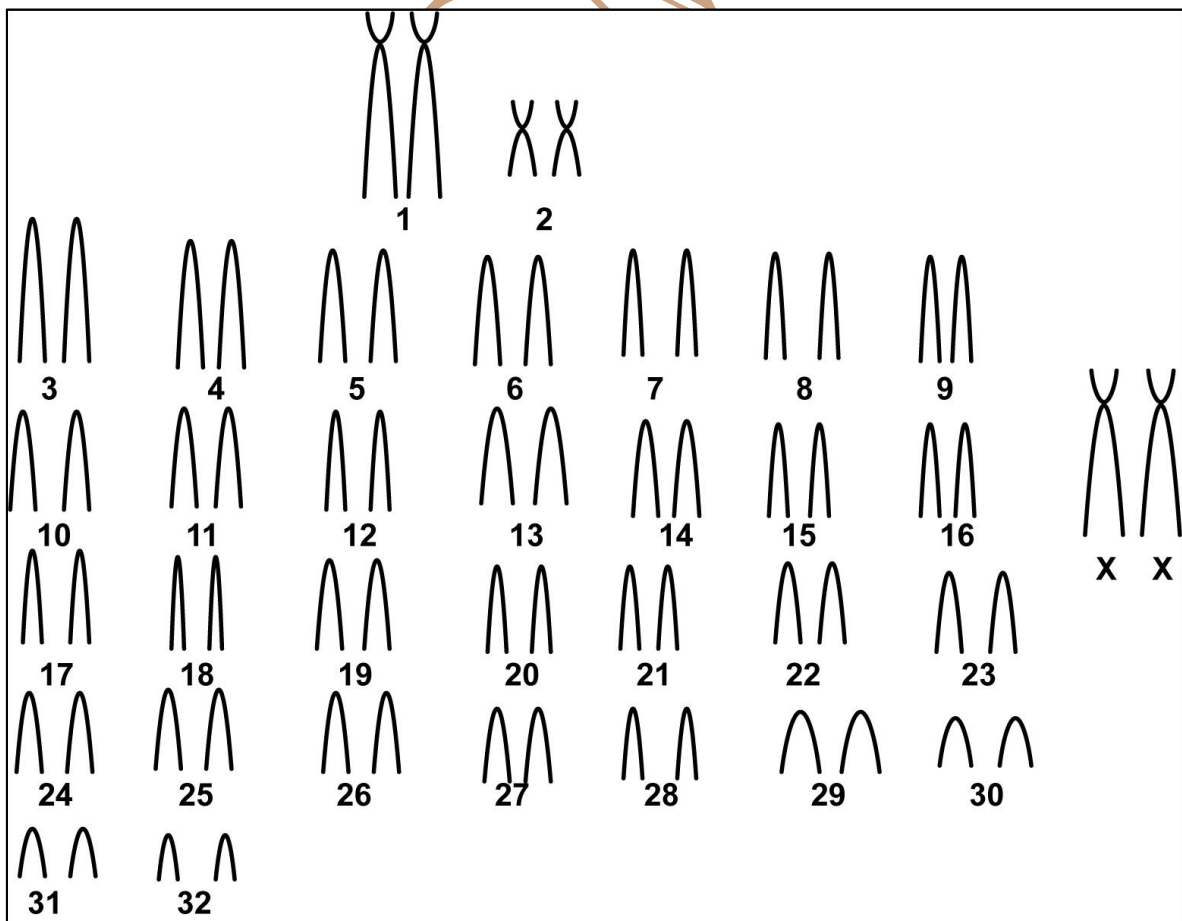


# *Calomys expulsus* (Lund, 1841)

Modified karyotype from Bonvicino *et al.* (2010)

2n	NF	X Chromosome	Y Chromosome	Locality
66	68	Large subtelocentric	Small acrocentric	DF; Minaçu, Ipameri, Caldas Nova, Corumbáiba, Alto Paraíso, Cavalcanti - GO; Piquizeiro, São Sebastião - TO; Cocos, Jaborandi, Itaetê, Mucugê - BA; São João do Piauí - PI (Brazil)

Conventional staining



## Reference

Bonvicino, C.B.; Oliveira, J. A.; Gentile, R. 2010. **A new species of *Calomys* (Rodentia: Sigmodontinae) from Eastern Brazil.** Zootaxa 2336: 19–25.

## Link

<http://www.mapress.com/zootaxa/2010/f/zt02336p035.pdf>

CIPEMAB