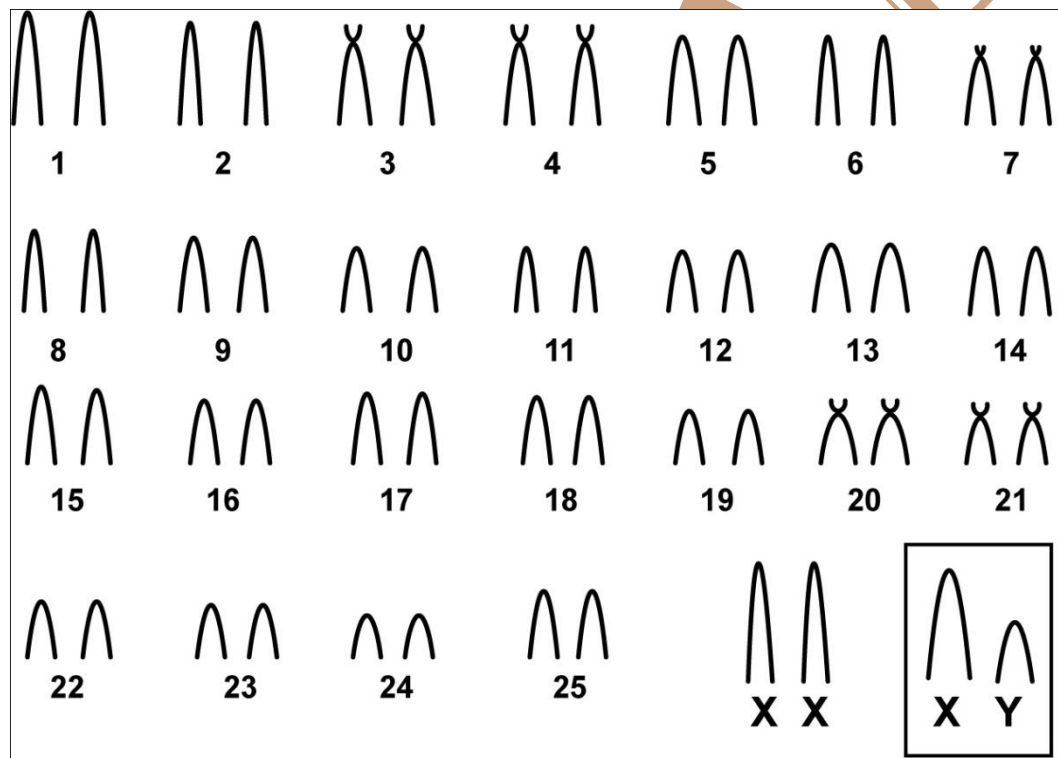


*Brucepattersonius soricinus* Hershkovitz, 1998

Karyotype modified from Di-Nizo (2014)

2n	NF	X Chromosome	Y Chromosome	Locality	Coordinate
52	52	Large submetacentric	Small acrocentric	Santa Virgínea, Serra do Mar State Park – SP (Brazil)	23°24'S - 23°17'S, 45°03'W - 45°11'W

Conventional staining



\*G-Banding and C-Banding available in Di-Nizo (2014)

## Reference

Di-Nizo, C.B.; Neves, C.L.; Vilela, J.F.; Silva, M.J.J. 2014. **New karyological data and cytotaxonomic considerations on small mammals from Santa Virgínia (Parque Estadual da Serra do Mar, Atlantic Forest, Brazil)**. Comparative Cytogenetics 8(1): 11–30. doi: 10.3897/CompCytogen.v8i1.6430.

## Link

<http://www.ncbi.nlm.nih.gov/pmc/articles/PMC3978240/>