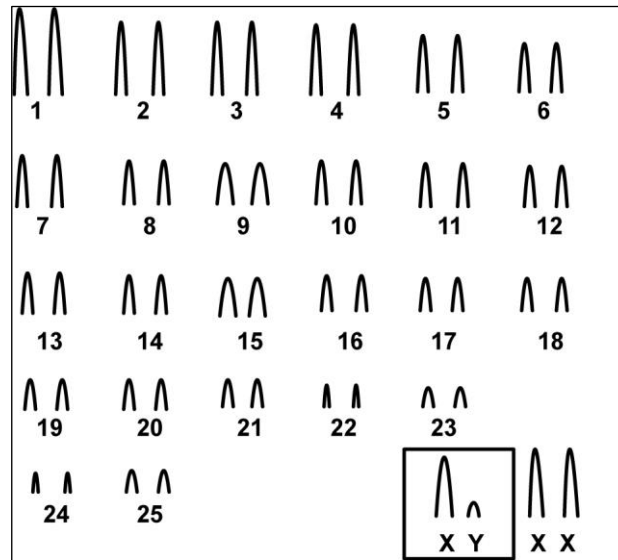


Blarinomys breviceps (Winge, 1887)

Karyotype modified from Ventura *et al.* (2012)

| 2n | NF | X Chromosome | Y Chromosome | Locality | Coordinate |
|----|----|--------------------|-------------------|--|-------------------------------------|
| 52 | 50 | Medium acrocentric | Small metacentric | Jussari, Private Reserve of Natural patrimony Serra do Teimoso – BA; | 15°08'S/39°31'W; 15°09'S/39°31'W |
| | | | | Una – BA; | 15°17'S/39°03'W; 15°10'S/39°04'W |
| | | | | Camacan, Serra Bonita – BA; | 15°25'S/39°29' W |
| | | | | Jequitinhonha, Mata Escura – MG; | 16°26'S/41°00' W |
| | | | | Trancoso, Nova Alegria Farm – BA; | 16°31'S/39°07'W |
| | | | | Pinheiros, Córrego do Veado Biological Reserve – ES; | 18°21'S/40°09'W |
| | | | | Linhares – ES; | 19°39'S/40°07'W |
| | | | | Catas Altas, Mariana Road – MG; | 20°11'S/43°29'W |
| | | | | Ouro Branco, Serra do Ouro Branco – MG; | 20°30'S/43°37'W |
| | | | | Alto Caparaó, Caparaó National Park- MG | 20°25'S/41°50'W 20°28'S/41°44'W |

Conventional staining



| 2n | NF | X Chromosome | Y Chromosome | Locality | Coordinate |
|----|----|--------------------|-------------------|--|-----------------|
| 45 | 50 | Medium acrocentric | Small metacentric | Cariacica, Biological Reserve Duas Bocas - ES (Brazil) | 20°17'S/40°31'W |

*C-Banding (2n = 42A, XY +1B) available in Ventura *et al.* (2012)

| 2n | NF | X Chromosome | Y Chromosome | Locality | Coordinate |
|----|----|--------------------|--------------|--|-----------------|
| 43 | 50 | Medium acrocentric | - | São Paulo, Serra da Cantareira - SP (Brazil) | 23°70'S/46°63'W |

*G-Banding (2n = 37A, XX +4Bs) available in Ventura *et al.* (2012)

| 2n | NF | X Chromosome | Y Chromosome | Locality | Coordinate |
|----|----|--------------------|-------------------|-------------------------------------|-----------------|
| 37 | 50 | Medium acrocentric | Small acrocentric | São Bernardo do Campo - SP (Brazil) | 23°69'S/46°56'W |

*G-Banding (2n = 34A, XY+1B) available in Ventura *et al.* (2012)

| 2n | NF | X Chromosome | Y Chromosome | Locality | Coordinate |
|----|----|--------------------|--------------|-------------------------------------|-----------------|
| 34 | 50 | Medium acrocentric | - | São Bernardo do Campo - SP (Brazil) | 23°69'S/46°56'W |

*G-Banding (2n = 32A, XX) available in Ventura *et al.* (2012)

| 2n | NF | X Chromosome | Y Chromosome | Locality | Coordinate |
|----|----|--------------------|--------------|---|-----------------|
| 31 | 50 | Medium acrocentric | - | Nativity of the Serra do Mar, Serra do Mar State Park - SP (Brazil) | 23°19'S/45°05'W |

*G-Banding (27A,XX+2Bs) available in Ventura *et al.* (2012)

Reference

Ventura, K.; Sato-Kuwabara, Y.; Fagundes, V.; Geise, L.; Leite, Y.L.R.; Costa, L.P.; Silva, M.J.J.; Yonenaga-Yassuda, Y.; Rodrigues, M.T. 2012. **Phylogeographic Structure and Karyotypic Diversity of the Brazilian Shrew Mouse (*Blarinomys breviceps*, Sigmodontinae) in the Atlantic Forest.** Cytogenetic and Genome Research 138:19–30.

Link

http://www.ecoevo.com.br/publicacoes/pesquisadores/maria_jose/Ventura_et_al_2012.pdf