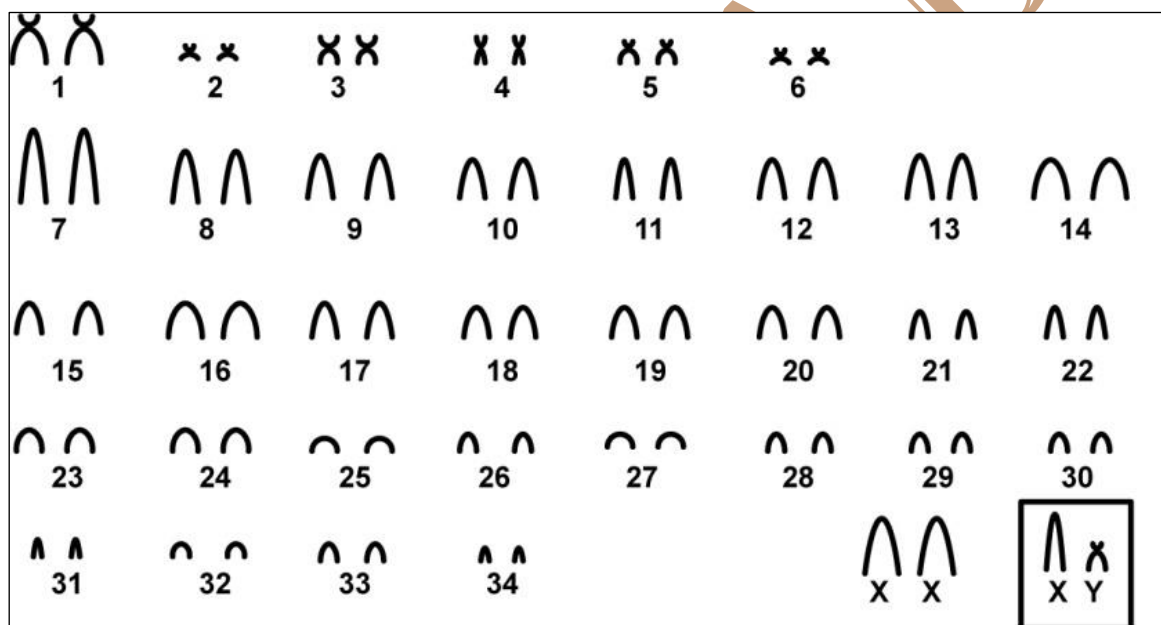


## *Bibimys labiosus* (Winge, 1887)

Cariótipo modificado de Gonçalves *et al.* (2005)

2n	NF	Cromossomo X	Cromossomo Y	Localidade	Coordenada
70	80	Subtelocêntrico grande	Acrocêntrico pequeno	Mata do Paraíso, Viçosa – MG (Brasil)	20° 45' S, 42° 53' W, alt. 650 m

Coloração Comum



\*Bandas G e C disponíveis em Gonçalves *et al.* (2005)

### Referência

Gonçalves, P.R.; Oliveira, J.A.; Corrêa, M.O.; Pessoa, M.L. 2005. **Morphological and Cytogenetic Analyses of *Bibimys labiosus* (Winge, 1887) (Rodentia, Sigmodontinae): Implications for its Affinities with the Scapteromyine Group.** University of Californian Publications in Zoology.

### Link

[https://www.academia.edu/1153469/Morphological\\_and\\_Cytogenetic\\_Analyses\\_of\\_Bibimys\\_labiosus\\_Winge\\_1887\\_Rodentia\\_Sigmodontinae\\_Implications\\_for\\_its\\_Affinities\\_with\\_the\\_Scapteromyine\\_Group](https://www.academia.edu/1153469/Morphological_and_Cytogenetic_Analyses_of_Bibimys_labiosus_Winge_1887_Rodentia_Sigmodontinae_Implications_for_its_Affinities_with_the_Scapteromyine_Group)