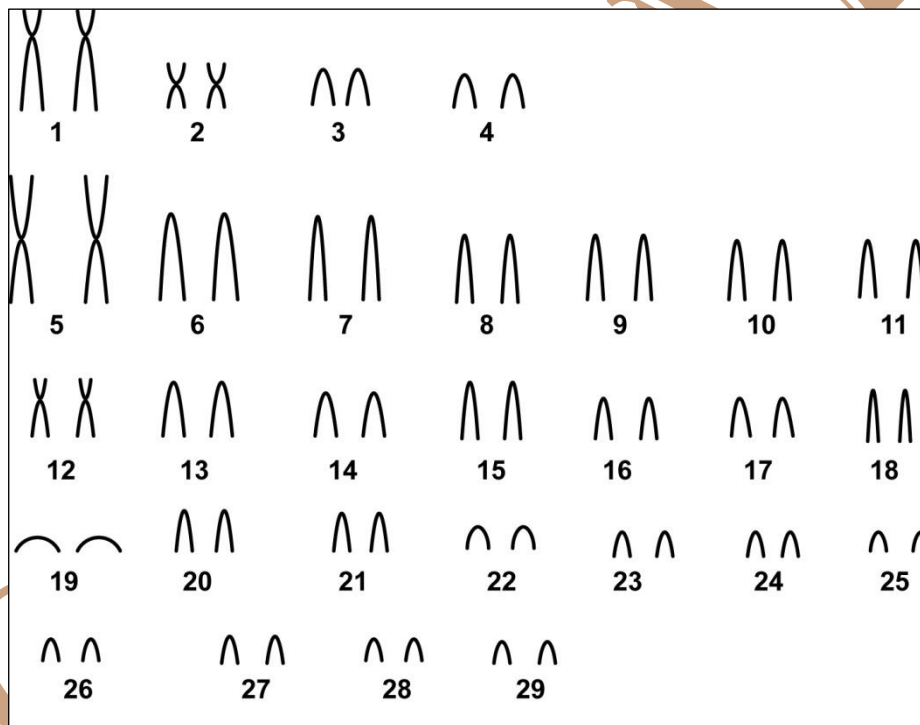


Abrawayaomys ruschii Cunha & Cruz, 1979

Karyotype modified from Pereira *et al.* (2008)

2n	NF	X Chromosome	Y Chromosome	Locality	Coordinate
58	It was not possible to identify	It was not possible to identify	It was not possible to identify	Sapucaí Village, (Bacuí indigenous land), Angra do Reis - RJ (Brazil)	22°53'S 44°23'W, 280 m

Conventional staining



Reference

Pereira, L.G.; Geise, L.; Cunha, A.A.; Cerqueira, R. 2008. *Abrawayaomys ruschii* Cunha & Cruz, 1979 (Rodentia, Cricetidae) no Estado do Rio de Janeiro, Brasil. Papéis Avulsos de Zoologia (São Paulo) 1807-0205.

Link

http://www.scielo.br/scielo.php?script=sci_arttext&pid=S0031-10492008000500001